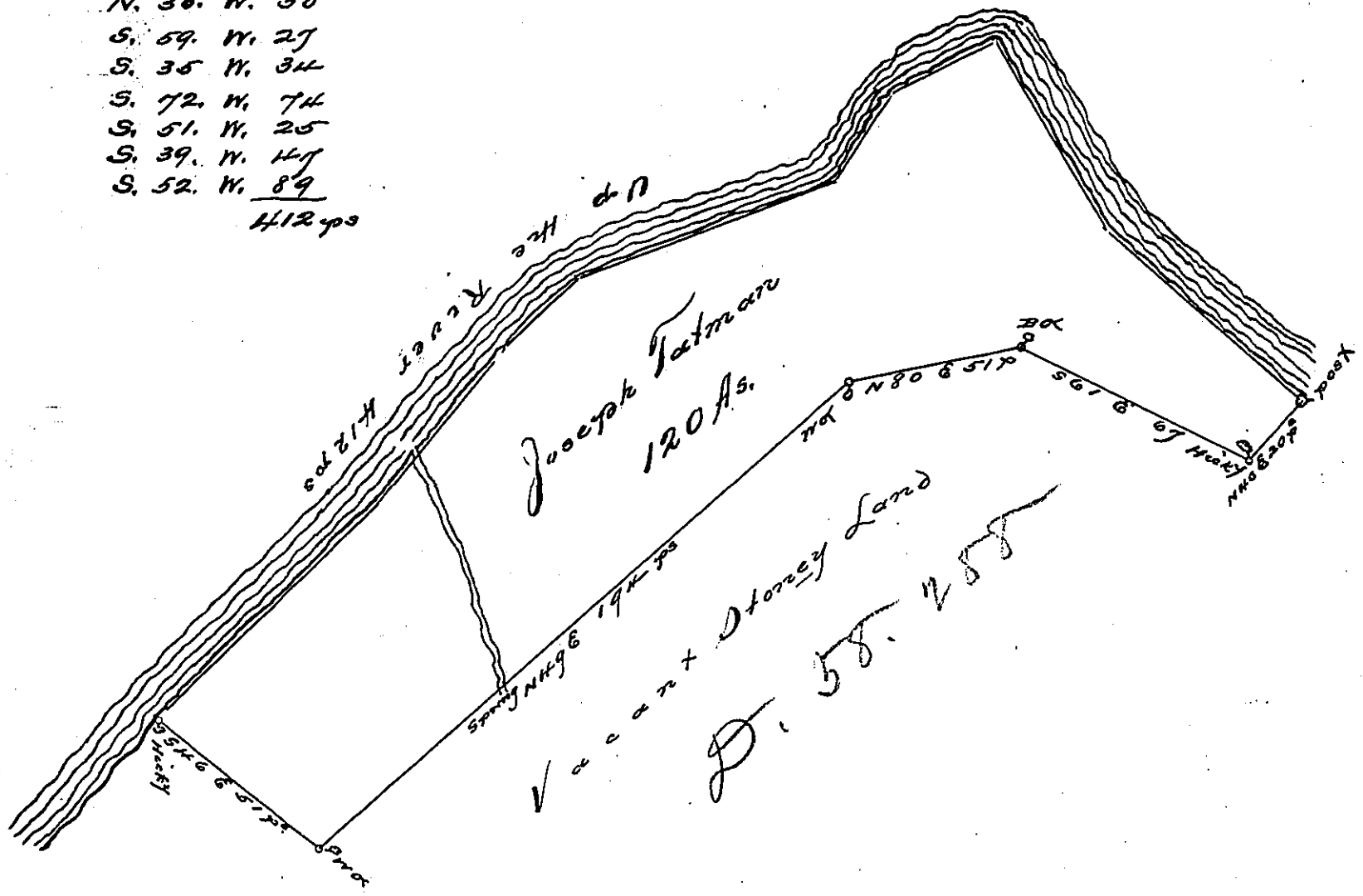


Courses up the River
 N. 47. W. 66
 N. 30. W. 50
 S. 59. W. 27
 S. 35. W. 34
 S. 72. W. 74
 S. 51. W. 25
 S. 39. W. 47
 S. 52. W. 89
 412.70



Draught of a Tract of Land situate on the East side of the Raystown Branch of Juniata in the County of Bedford. Containing one hundred and twenty acres and the usual allowance of six 70th Cent for Roads. &c. Surveyed the first Day of Aug. 1767 for Joseph Tatman In pursuance of an Order dated 11th of Aug. 1766. No 835.

George Woods. D.S.

To John Lukens Esqr.
 D.S.

IN TESTIMONY that the above is a copy of the original remaining on file in the Department of Internal Affairs of Pennsylvania, made conformably to an Act of Assembly approved the 16th day of February, 1833, I have hereunto set my Hand and caused the Seal of said Department to be affixed at Harrisburg, this third day of May 1898

James W. Latta
 Secretary of Internal Affairs.